



MAHA RERA NO.  
P51700050894



# HORIZON

A vertical world Uncover's

Project By:



**HCS REALTORS**  
*Building A Better Future*

Construction Finance by:  **Bank of Baroda**, Fort Branch

Sample Flat and Booking Assistance: Horizon Complex, Opp. Sant Home CBSE School, Near 7/11 Club,  
Kanakia Rd, Mira Road (E)-401107, Contact Us - +91 72087 71999

Website: [www.hcshorizon.com](http://www.hcshorizon.com)

Email - [info@hcshorizon.com](mailto:info@hcshorizon.com)

Disclaimer All the images, pictorials, visuals, elevation, perspectives, illustrations, model, specifications plans designs, drawings, dimensions, maps, facilities, amenities, features, and other information/details herein are conceptual indicative and for representation purpose only and are not to scale, and is subjective to the approval of the respective authorities. The promoters/Developers/Architect reserve the right to add, alter, delete or replace any of these in the interest of the development Without any notice or obligation. This printed matenal does not constitute an offer or contract of any nature whatsoever between the Promoters/Developers and the recipient. All transactions in this development shall be subject to and governed by the terms & conditions of the Agreement for sale to be entered into between the parties. The intending purchasers are advised to use their discretion in relying on the Information/details/ amenities described/ shown herein Any financial scheme will be applicable/executed basis the eligibility of purchaser Details of the same to be checked with developer & relevant financial institutions. The time references are indicative only Conditions Apply.



Home is not a place... it's a feeling



An Unmatched Living  
Experience

Combining all the elements of the living to make your life better in every aspect.

- 

100 m  
School/College
- 

150 m  
Bus Stop
- 

250 m  
Health Care
- 

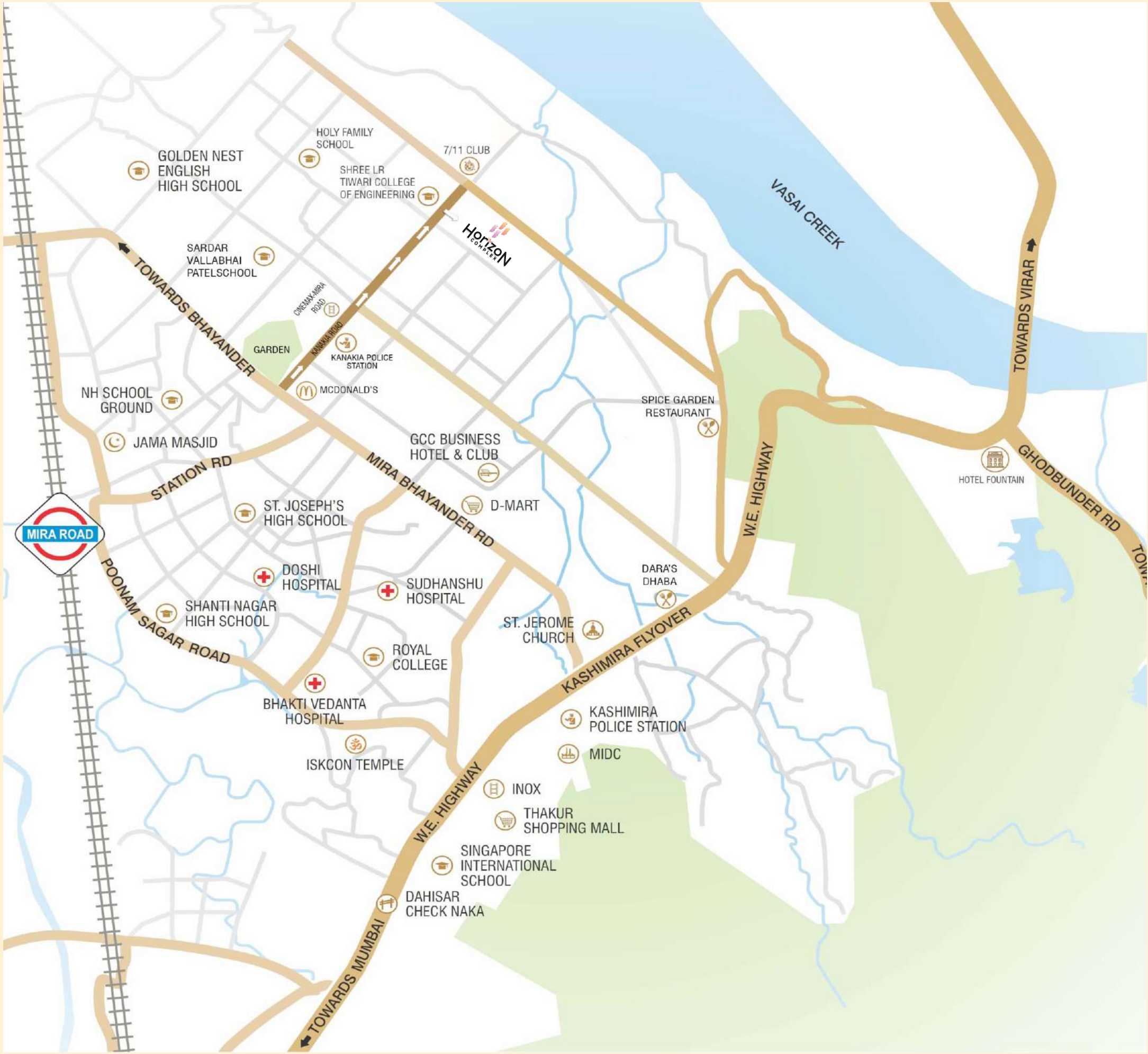
500 m  
Shopping
- 

1.0Km  
Multiplex
- 

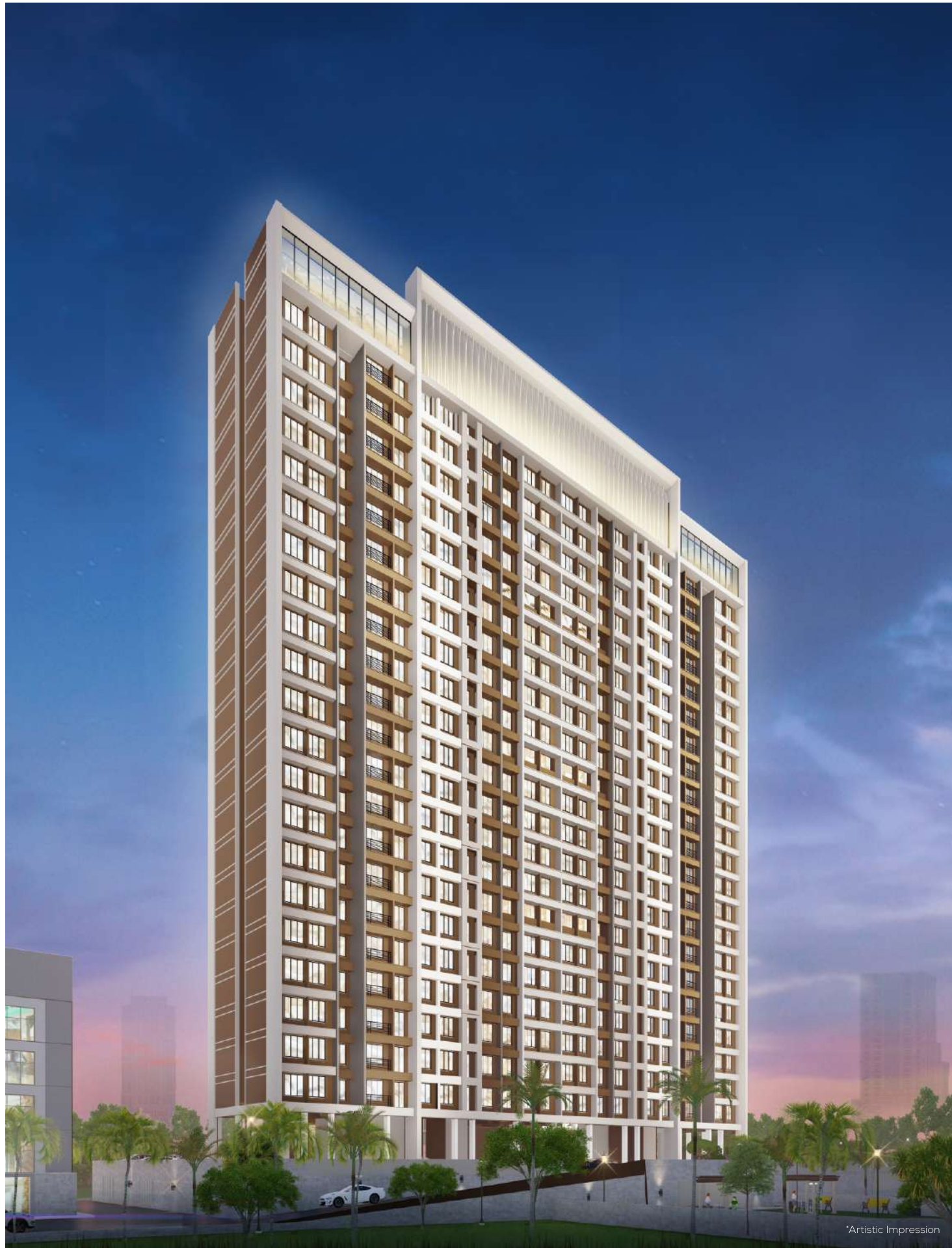
1.6 Km  
Metro Station
- 

3.5 Km  
Railway Station
- 

3.5 Km  
W.E.Highway







# HORIZON

A Vertical world Uncover's

Mira Road has been growing for the whole of the last decade. It is emerging as one of the most preferred destination for many. Hence, it is also witnessing great social infrastructural development. Horizon is a new beginning of Luxury. Thoughtfully designed modern architecture, this premium and spacious apartments in Mira Road are the new definition of a value for money luxury with a grand lifestyle



21 Storey  
Majestic Tower



Thoughtfully Crafted  
Futuristic Homes



State-Of-The-Art  
Design & Architecture



Unobstructed View  
With Balconies For  
Selective Residences



3 Expansive  
High Speed Elevators



Electric  
Car Charging Points



WiFi Enabled  
Building

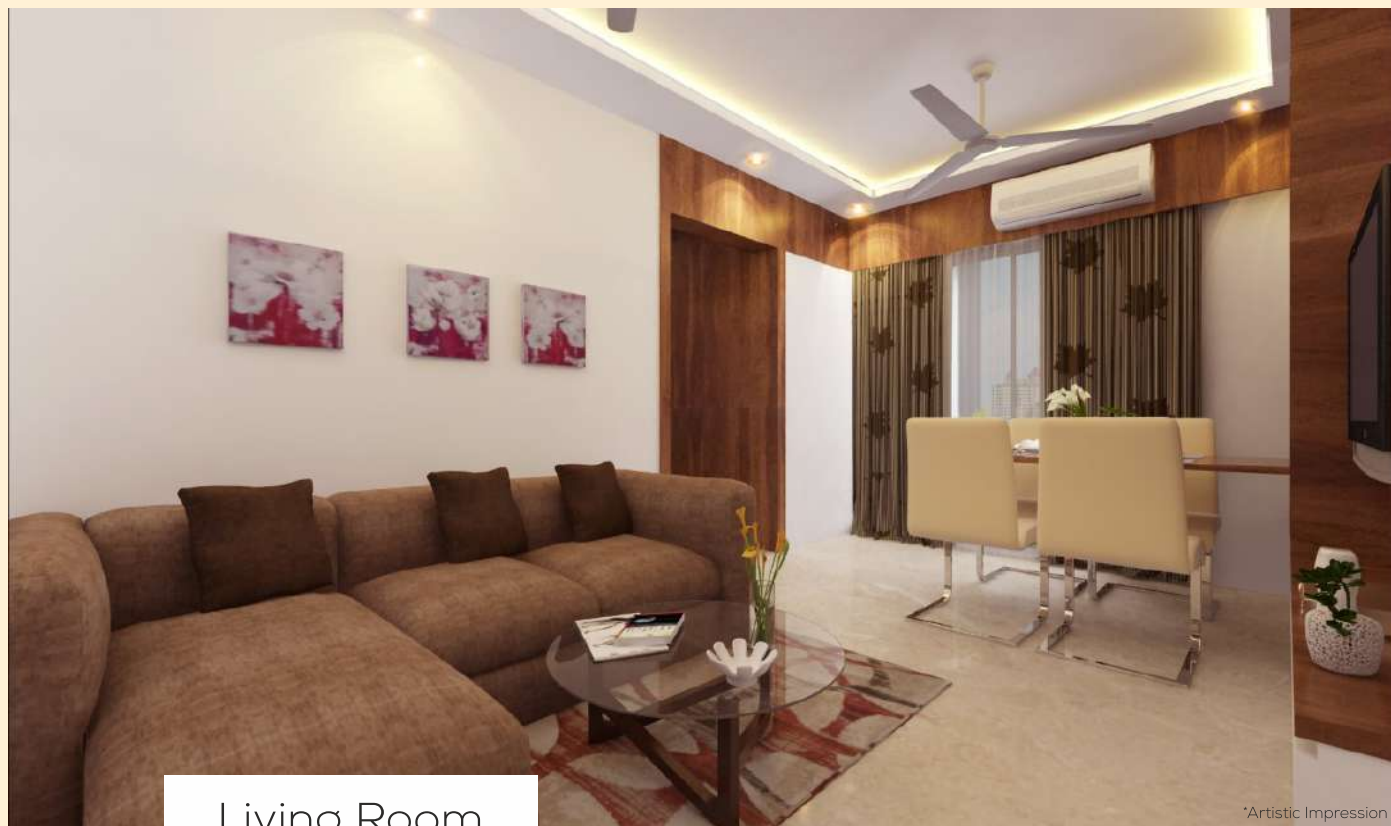


3 Level Amenities



A Variety Of  
Exceptional Amenities



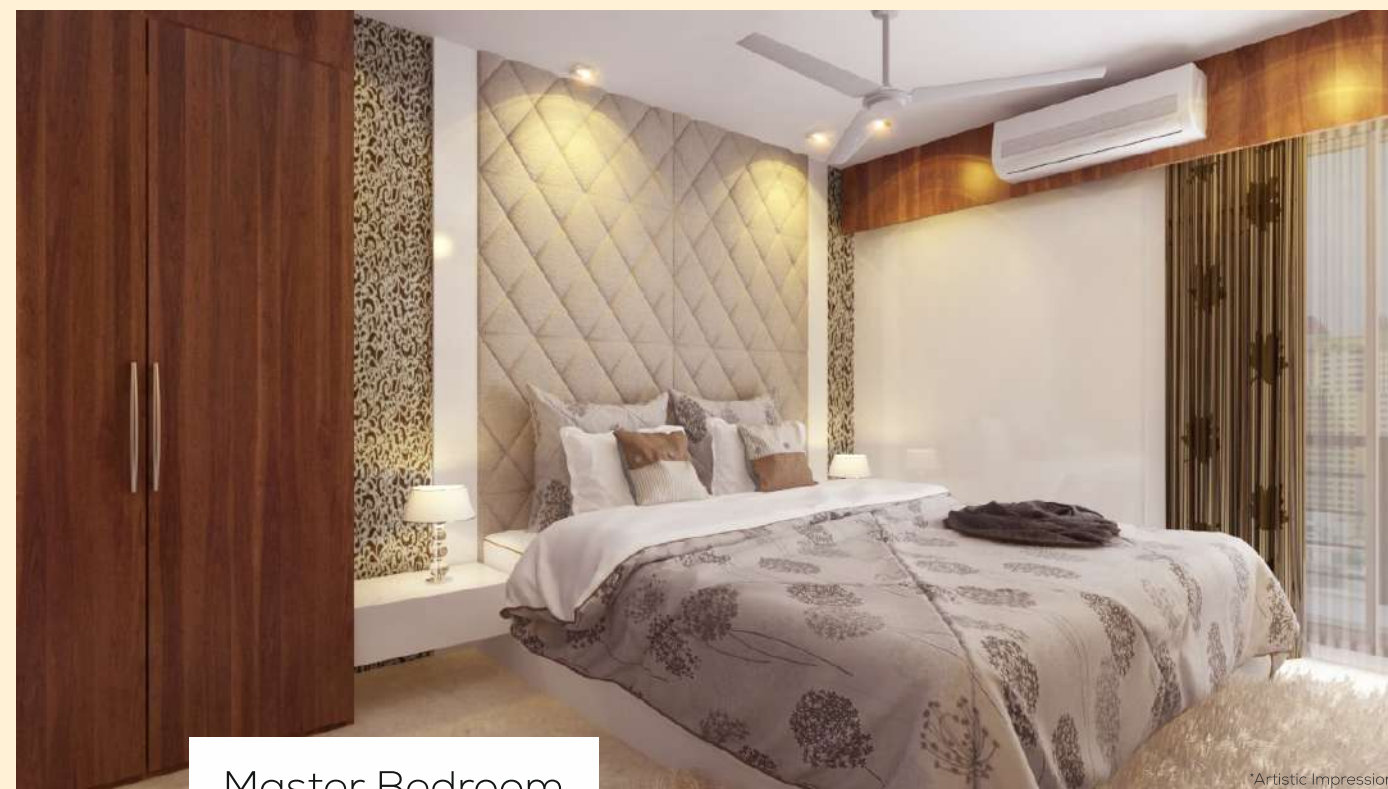


Living Room

\*Artistic Impression

## Homes that bring it All Together

Tailored for those who desire to make every moment of their lives nothing less than a pleasant memory that they will cherish forever.



Master Bedroom

\*Artistic Impression



Welcome To The  
World Where Leisure  
and Luxury Awaits

# PODIUM AMENITIES

- |                         |                            |
|-------------------------|----------------------------|
| 1. Grand Entrance Lobby | 5. Gated Community         |
| 2. Landscape Garden     | 6. Senior Citizen Sit Outs |
| 3. Ample Car Parking    | 7. Connectivity Walkway    |
| 4. Gupshup Area         | 8. EV Charging Stations    |

# SKY AMENITIES

- |                           |                         |
|---------------------------|-------------------------|
| 9. Roof Top Lounge        | 16. Sky Cinema          |
| 10. Star gazing Deck      | 17. Party Lounge        |
| 11. Childrens Play area   | 18. Catchup Zone        |
| 12. Sky Gym               | 19. Reflexology Pathway |
| 13. Sky Yoga & Meditation | 20. Bay View Deck       |
| 14. Pergola Seating       | 21. Gyaan Mandal        |
| 15. Sky Garden            | 22. Insta Moments       |

# TOWER AMENITIES

- |  |                                  |
|--|----------------------------------|
| 23. Society Chamber                    | 29. Night Lights                 |
| 24. Driver's/Maid Toilets              | 30. Fire Fighting System         |
| 25. Water Storage                      | 31. Earthquake Resistance Design |
| 26. Advanced Security System           | 32. High Speed Elevators         |
| 27. Rainwater Harvesting-Sewage System | 33. Power Backup System          |
| 28. Intercom Sevices                   | 34. Pump Room                    |

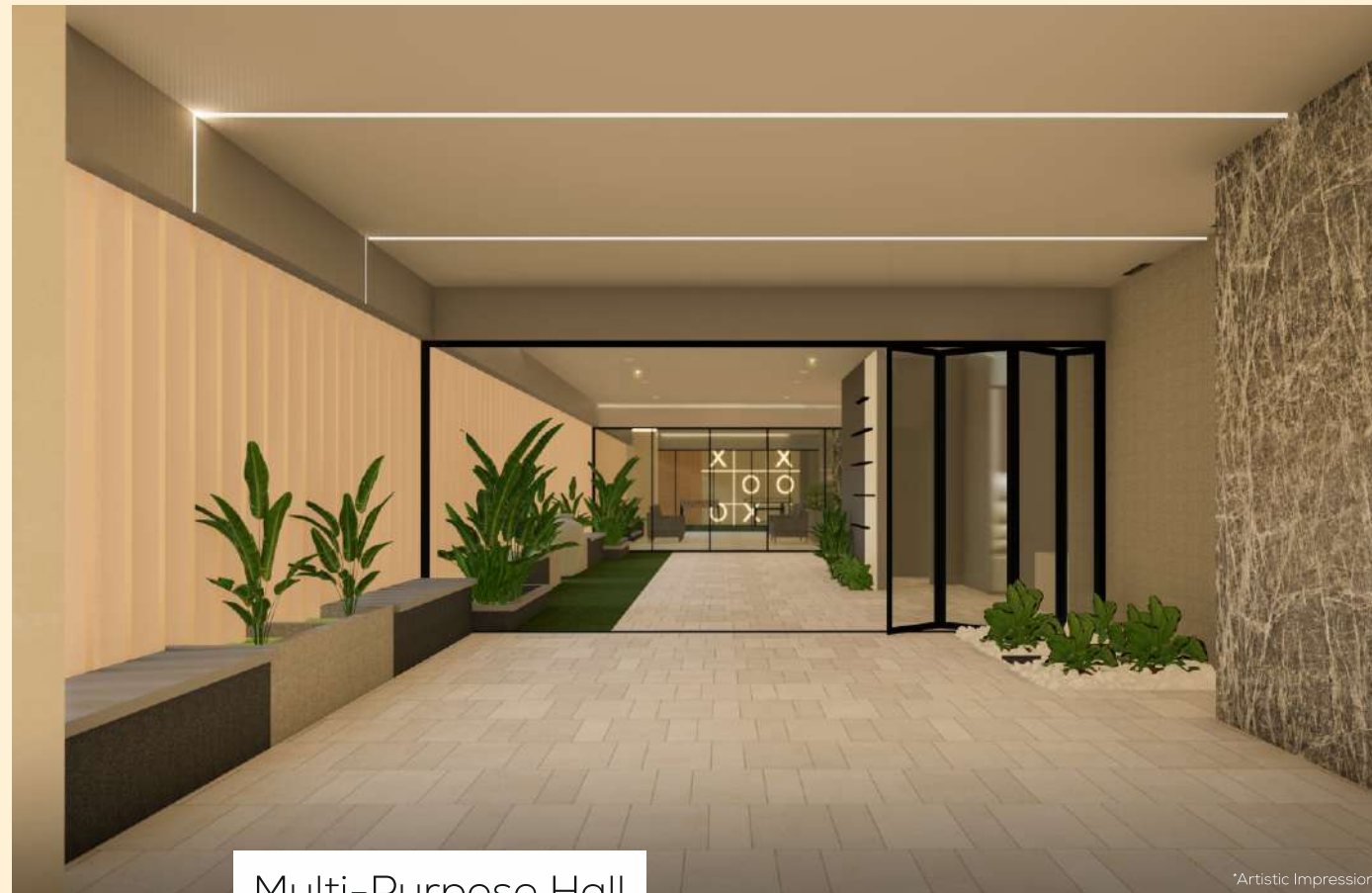


# Amenities Floor Plan

- 1. Multi-Purpose Hall
- 2. Lounge Area
- 3. Creche
- 4. Floral Garden
- 5. Mini Theatre
- 6. iSpace
- 7. Library & Reading Zone
- 8. Indoor Game zone
- 9. Health Club
- 10. Toddlers Play Area and Dance Studio





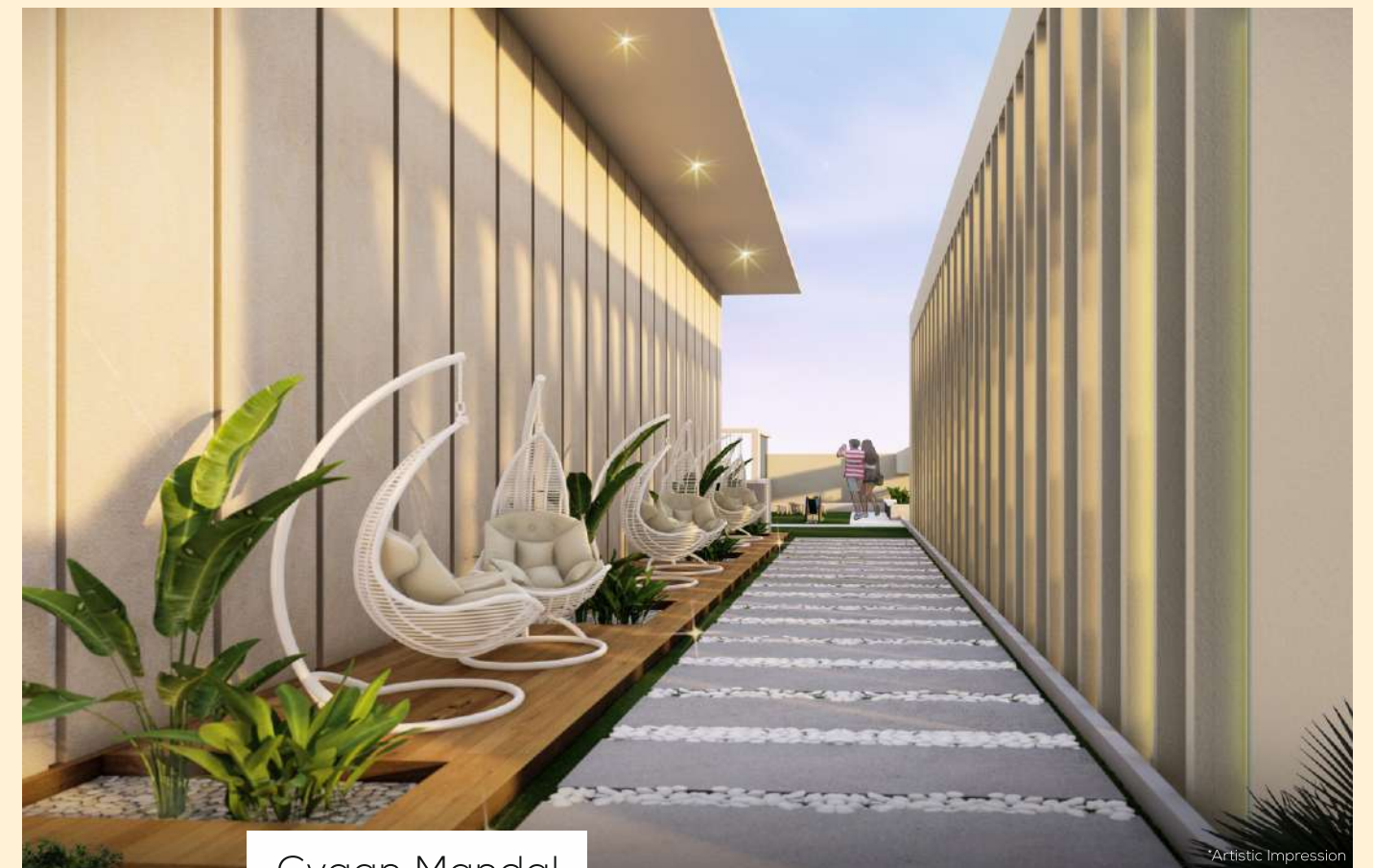


Multi-Purpose Hall

\*Artistic Impression

## An Ideal Blend To Work Play And Live

Ispace is a spontaneous twist on creativity and original ideas, combining the worlds of inspirations, leisure, and productivity. A multi-purpose space equipped with the finest facilities where kids can attend zoom lectures, Gyaan Mandal is a perfect space to unwind and recharge your energy with a cosy book. Home brewed Coffee for refreshment and work pods, iSpace is the holistic approach to the work-play-live balance



Gyaan Mandal

\*Artistic Impression



# Typical Floorplan





# B WING



# Built on Powerful Alliances

Masterpieces Are Built On The Expertise Of Industry Leaders. Creating A Landmark Required No Less. Empowered By The Finesse Of Our Best Partners, Meet The Maestros Behind The Icon!



## DESIGNING ARCHITECTS

BSPACE Architects is an emerging architectural firm that offers end to end service in Architectural, Interior and branding. Designs that are strongly driven by aesthetic and functionality, Their vision is to enhance a space into a Lifestyle.



## STRATEGIC PARTNER

Ensure clarity in every aspect backed by the expertise of New Property Bazaar.



## PRODUCT DESIGN & INTERIOR

"Ghar Ho to Aisa" offers its customers a selection of aesthetically beautiful yet practical solutions for improved space utilization. The company's focus is not just on a single product , but also on the complete experience of the product design.



## PROJECT MANAGEMENT CONSULTANT

Known as the alliance of the choice for leading residential and commercial projects across the country, Sandeep Shikre and Associates are leading project management consultants, helping create spaces that last the test of the time.



## 100% Customer Friendly Unique Payment Plan

By paying only 10% extra, the home buyer saves over 40% of interest cost. The home buyer not only enjoys all the benefits of a traditional home loan, but also reduces the repayment period from 20 years to just 5-7 years with almost the same amount of EMI.